



**iFLOW Cold Climate Air Source Heat Pumps
SUBMITTAL DATA SHEET**

36,000 BTU/H ODU		+	A-Coil IDU	
Location: _____	Approval: _____			
Engineer: _____	Date: _____			
Submitted to: _____	Construction: _____			
Submitted by: _____	Unit #: _____			
Reference: _____	Drawing #: _____			

Set Model
 Indoor unit model 70C3036CA
 Outdoor unit model 70HPIC36A

AHRI CERTIFIED REFERENCE #: 212546252

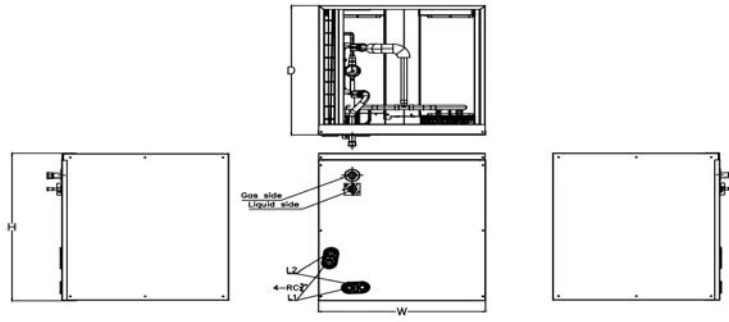
Certified AHRI
 UL



SYSTEM PERFORMANCE DATA		
Power supply		
Normal Operational Voltage	(V, Ph, Hz)	208/230V, 1Ph, 60Hz
Voltage Range	(V)	187-253
Electrical		
Minimum circuit ampacity	(A)	40.0
Max.fuse	(A)	50.0
Connection wiring		18AWG
Cooling		
Rated Capacity	(Btu/h)	35000
Capacity Range	(Btu/h)	11700-40000
Power Input (Max)	(W)	3530(800-5000)
Rated current	(A)	14.8(3.5-21)
SEER	(Btu/W)	15.2
EER	(Btu/W)	10.0
Heating at 47F		
Rated Capacity	(Btu/h)	39000
Capacity Range	(Btu/h)	9200-50000
Power Input (Max)	(W)	3600(800-5000)
Rated current	(A)	15.65(3.5-21)
HSPF4	(Btu/W)	10.0
HSPF5	(Btu/W)	8.0
COP	W/W	3.18
Heating at 5F		
Capacity	(Btu/h)	32000
COP	W/W	2.0
REFRIGERANT PIPE DATA		
Design pressure	(PSIG)	550/340
Refrigerant Type	(Oz)	R410A/165.79
Refrigerant precharge	(ft)	25.0
	(m)	7.6
Additional charge for each ft	(oz/ft)	0.69
	(g/m)	65.0
Liquid side/ Gas side	(inch)	3/8" / 3/4"
	(mm)	φ9.52 / φ19
Max. pipe length	(ft)	213.3
	(m)	65.0
Max. difference in level	(ft)	98.4
	(m)	30.0
Connection method	Indoor	Braze
	Outdoor	Flared to braze
Indoor(cooling)	(Deg. °F / °C)	62-90 / 17~32
Indoor(heating)	(Deg. °F / °C)	32-86 / 0-30
Outdoor(cooling)	(Deg. °F / °C)	5-122 / -15~50
Outdoor(heating)	(Deg. °F / °C)	-22-75 / -30-24

INDOOR UNIT DATA		
Throttle		TXV for Cooling
IRV	inch ³	106.9
Air flow	SCFM	960
Pressure drop	Pa	65.1
	In. wg.	0.26
Indoor unit		
Dimension (WxDxH)	(inch)	21x21x24
	(mm)	533x533x609
Packing(WxDxH)	(inch)	23.5x25.5x25.5
	(mm)	595x650x645
Net/Gross weight	(lbs.)	66.58/77.16
	(kg)	30.2/35
OUTDOOR UNIT DATA		
Compressor		
Type		EAPQ420D1UMUA
Model		ROTARY
Brand		GMCC
Capacity	(Btu/h)	44014.8
Input	(W)	3565
Rated current (RLA)	(A)	-
Refrigerant oil/oil charge	(ml)	1460±15ml/ESTER OIL VG74
Throttle		EEV for heating
Outdoor fan motor		
Model		ZKFN-85-8-22-5
Qty		2
Input	(W)	--
RLA	(A)	1.20
Speed	(r/min)	850/750/650
Air flow & Noise level		
Outdoor air flow (Max.)	(CFM)	4500.0
Outdoor noise level	[dB(A)]	61.0
Outdoor unit		
Dimension (W×D×H)	(inch)	37.5x16.5x52.5
	(mm)	952x415x1333
Packing (W×D×H)	(inch)	43.25x19.5x58.25
	(mm)	1095x495x1480
Net/ Gross weight	(lbs.)	227.07/255.73
	(kg)	103/116

Indoor unit dimension



Model	Unit	Dimensions (mm)			Drain size	
		W	D	H	L1	L2
12K-24K	mm	445	533	457		
	inch	17 1/2	21	18		
30K-48K	mm	533	533	609	Main drain hole	Overflow drain hole
	inch	21	21	24		
60K	mm	622	533	711		
	inch	24	21	28		

Outdoor unit dimension

