



**iFLOW HEAT PUMP SUBMITTAL DATA SHEET**

iFLOW Cased A-Coil (IDU) & Heat Pump (ODU) System	
Location: _____ Engineer: _____ Submitted to: _____ Submitted by: _____ Reference: _____	Approval: _____ Date: _____ Construction: _____ Unit #: _____ Drawing #: _____

<b>Set Code</b>	22023110001507
Indoor unit code	22023111000670
Outdoor unit code	22023116000102
<b>Set Model</b>	
Indoor unit model	70C1824AA
Outdoor unit model	70HP1R18A
<b>Certified</b>	
AHRI	
UL	



SYSTEM PERFORMANCE DATA			
<b>Power supply</b>			
Normal Operational Voltage	(V, Ph, Hz)	208/230V, 1Ph,	60Hz
Voltage Range	(V)		187-253
<b>Electrical</b>			
Minimum circuit ampacity(Outdoor)	(A)		16.0
Max.fuse(Outdoor)	(A)		20.0
Connection wiring			N/A
<b>Cooling</b>			
Capacity	(Btu/h)	18000(6000~19000)	
Power Input	(W)	1770(240~1900)	
Current	(A)	7.3(0.8~8.5)	
SEER2	(Btu/W)		15.2
EER2	(Btu/W)		10.2
<b>Heating</b>			
Capacity	(Btu/h)	18000(5000~18500)	
Power Input	(W)	1600(300~1800)	
Current	(A)	6.6(1.2~7.5)	
HSPF2.4	(Btu/W)		8.5
HSPF2.5	(Btu/W)		6.9
COP	W/W		3.30
Heat at 17F(H32)	(Btu/h)		12800
Heat at 5F(H42)	(Btu/h)		11200
COP at 5F(H42)	W/W		2.00

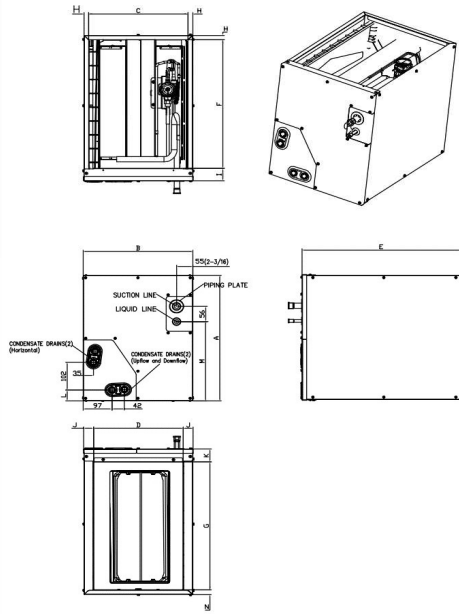
INDOOR UNIT DATA			
<b>IRV</b>	inch <sup>3</sup>		58.30
<b>Air flow</b>	SCFM		700
<b>Pressure drop</b>	Pa		63.00
	In. wg.		0.25
<b>Air flow &amp; Noise level</b>			
Indoor air flow (Hi/Med/Lo) (No duct)	(CFM)		//705.88//
Indoor noise level (Hi/Med/Lo)	[dB(A)]		0/0/0
<b>Dehumidification</b>	(LH)		2.15
<b>Indoor unit</b>			
Dimension (WxDxH)	(inch)	21.02x14.49x17.99	
	(mm)	534x368x457	
Packing(WxDxH)	(inch)	17.60x26.06x20.55	
	(mm)	447x662x522	
Net/Gross weight	(lbs.)	41.67/46.52	
	(kg)	18.9/21.1	

REFRIGERANT PIPE DATA			
Throttle type	Indoor unit		TXV
	Outdoor unit	EEV for heating	
Design pressure	(PSIG)		550/340
Refrigerant Type			R410A
Refrigerant charge	oz		56.44
Refrigerant precharge	(ft)		25.0
	(m)		7.5
Additional charge for each ft	(oz/ft)		0.69
Additional charge for each m	(g/m)		65.0
Liquid side/ Gas side(indoor)	(inch)	3/8" / 3/4"	
	(mm)	9.52/19	
Liquid side/ Gas side(outdoor)	(inch)	3/8" / 5/8"	
	(mm)	9.52/16	
Max. pipe length	(ft)		164.0
	(m)		50.0
Max. difference in level	(ft)		82.0
	(m)		25.0
Connection method			Flared
Indoor(cooling)	(Deg. °F)		60~90
	(Deg. °C)		16~32
Indoor(heating)	(Deg. °F)		32~86
	(Deg. °C)		0~30
Outdoor(cooling)	(Deg. °F)		5~122
	(Deg. °C)		-15~50
Outdoor(heating)	(Deg. °F)		-13~75
	(Deg. °C)		-25~24

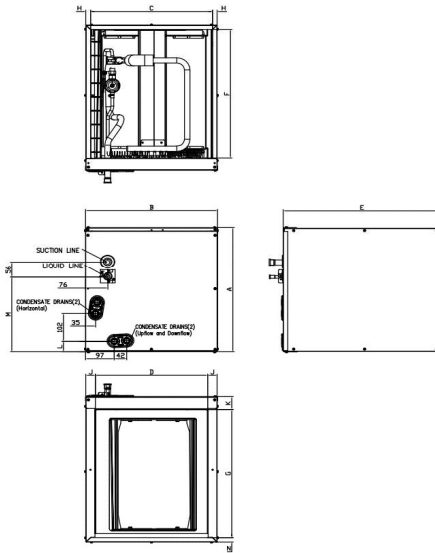
OUTDOOR UNIT DATA			
<b>Compressor</b>			
Type			ROTARY
Model			KSN140D21UFZ
Brand			GMCC
Capacity	(Btu/h)		14962
Input	(W)		1140
Rated current (RLA)	(A)		9
Refrigerant oil/oil charge	(ml)		VG74 440
<b>Outdoor fan motor</b>			
Model			ZKFN-34-10-1-3
Qty			1
Input	(W)		/
Output	(W)		34
RLA	(A)		1.0
Speed	(r/min)		840/700/650
<b>Air flow &amp; Noise level</b>			
Outdoor air flow (Max.)	(CFM)		1450
Outdoor noise level	[dB(A)]		57.0
<b>Outdoor unit</b>			
Dimension (WxDxH)	(inch)	31.69x12.99x21.81	
	(mm)	805x330x554	
Packing (WxDxH)	(inch)	36.02x14.57x24.21	
	(mm)	915x370x615	
Net/ Gross weight	(lbs.)	75.84/81.35	
	(kg)	34.4/36.9	
<b>Accessories</b>			
Adaptor for welding(3/4")	Qty		1
Adaptor for welding(3/8")	Qty		1
Adaptor (5/8" to 3/4")	Qty		1

Indoor unit dimension

NEW PANEL STYLE



OLD PANEL STYLE



Dimensions	KV-14F-A		KV-14F-B		KV-17F-A		KV-17F-B		KV-21F-A		KV-21F-B		KV-24F-A	
	NEW PANEL STYLE 18K/20K/22K/24K	NEW PANEL STYLE 30K/36K	NEW PANEL STYLE 30K/36K	NEW PANEL STYLE 30K/36K	NEW PANEL STYLE 30K/36K	NEW PANEL STYLE 30K/36K	OLD PANEL STYLE 18K/24K	OLD PANEL STYLE 18K/24K	OLD PANEL STYLE 30K/36K/48K	OLD PANEL STYLE 30K/36K/48K	NEW PANEL STYLE 48K	NEW PANEL STYLE 48K	OLD PANEL STYLE 60K	OLD PANEL STYLE 60K
A Model Height	18	457	23-1/2	598	23-1/2	599	18	461	24	609	28	711	28	711
B Model Width	14-1/2	368	14-1/2	368	17-1/2	445	17-1/2	445	21	533	21	533	24-1/2	622
C Supply Air Opening Width	13-1/4	336	13-1/4	336	16-3/16	411	16-3/16	411	19-3/4	502	19-3/4	502	23-1/4	591
D Return Air Opening Width	12	303	12	303	15-1/8	384	15-1/8	384	19-1/2	496	19-1/2	496	23	585
E Model Depth	21	534	21	534	21	533	21	533	21	533	21	533	21	533
F Supply Air Opening Depth	18-5/8	473	18-5/8	473	18-5/8	473	18-5/8	473	18-5/8	473	18-5/8	473	18-5/8	473
G Return Air Opening Depth	18-1/2	471	18-1/2	471	18	458	18	458	18-1/2	470	18-1/2	470	18-1/2	470
H Supply Air Opening Side Clearance	5/8	16	5/8	16	5/8	16	5/8	16	5/8	16	5/8	16	5/8	16
I Supply Air Opening Front Clearance	1-3/4	45	1-3/4	45	1-3/4	45	1-3/4	45	1-3/4	45	1-3/4	45	1-3/4	45
J Return Air Opening Side Clearance	5/8	16	5/8	16	1-3/16	30	1-3/16	30	3/4	19	3/4	19	3/4	19
K Return Air Opening Front Clearance	1-13/16	46	1-13/16	46	1-13/16	46	1-13/16	46	1-13/16	46	1-13/16	46	1-13/16	46
L Condensate Drains Height	1-9/16	40	1-9/16	40	1-7/16	37	1-7/16	37	2-1/8	54	2-1/8	54	2-1/8	54
M Liquid Line Height	11-1/2	292	11-1/2	292	16-1/2	418	10-7/8	276	16-5/16	414	21	533	20-1/4	514
N Return Air Opening Side Clearance	3/4	19	3/4	19	3/4	19	1-3/16	30	3/4	19	3/4	19	3/4	19

Outdoor unit dimension

