



## iFLOW HEAT PUMP SUBMITTAL DATA SHEET

iFLOW Cased A-Coil (IDU) & Heat Pump (ODU) System	
Location: _____	Approval: _____
Engineer: _____	Date: _____
Submitted to: _____	Construction: _____
Submitted by: _____	Unit #: _____
Reference: _____	Drawing #: _____

<b>Set Code</b>	22023110000807
Indoor unit code	22023111000510
Outdoor unit code	22023116000102
<b>Set Model</b>	
Indoor unit model	70C1824BA
Outdoor unit model	70HP1R18A
<b>Certified</b>	<div style="display: flex; align-items: center; gap: 10px;"> <div style="text-align: center;"> <p>AHRI</p> </div> <div style="text-align: center;"> <p>UL</p> </div> </div>



SYSTEM PERFORMANCE DATA			
<b>Power supply</b>			
Normal Operational Voltage	(V, Ph, Hz)	208/230V, 1Ph,	60Hz
Voltage Range	(V)	187-253	
<b>Electrical</b>			
Minimum circuit ampacity(Outdoor)	(A)	16.0	
Max.fuse(Outdoor)	(A)	20.0	
Connection wiring	N/A		
<b>Cooling</b>			
Capacity	(Btu/h)	18000(5800~18600)	
Power Input	(W)	1770(250~1890)	
Current	(A)	7.39(1.0~8.0)	
SEER2	(Btu/W)	15.2	
EER2	(Btu/W)	10.2	
<b>Heating</b>			
Capacity	(Btu/h)	18500(6500~19800)	
Power Input	(W)	1705(480~2100)	
Current	(A)	7.64(2.0~11.0)	
HSPF2-4	(Btu/W)	8.6	
HSPF2-5	(Btu/W)	6.9	
COP	W/W	3.18	
Heat at 17F(H32)	(Btu/h)	13000	
Heat at 5F(H42)	(Btu/h)	10400	
COP at 5F(H42)	W/W	1.94	

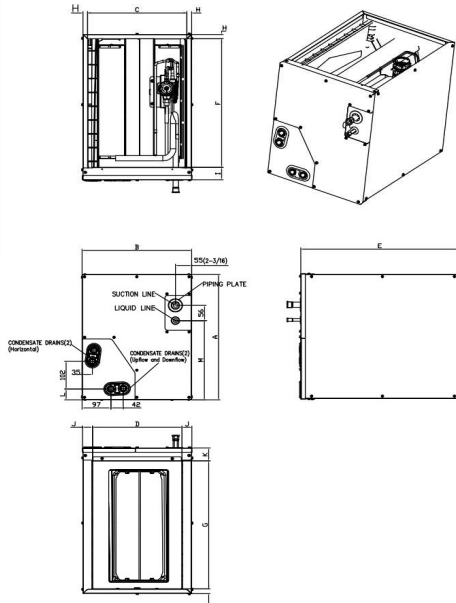
INDOOR UNIT DATA			
<b>IRV</b>	inch <sup>3</sup>	58.30	
<b>Air flow</b>	SCFM	550	
<b>Pressure drop</b>	Pa	32.70	
	In. wg.	0.13	
<b>Air flow &amp; Noise level</b>			
Indoor air flow (Hi/Med/Lo) (No duct)	(CFM)	//705.88//	
Indoor noise level (Hi/Med/Lo)	[dB(A)]	0/0/0	
<b>Dehumidification</b>	(LH)	2.15	
<b>Indoor unit</b>			
Dimension (WxDxH)	(inch)	17.52x20.98x17.99	
	(mm)	445x533x457	
Packing(WxDxH)	(inch)	20.47x26.18x20.28	
	(mm)	520x665x515	
Net/Gross weight	(lbs.)	42.77/52.03	
	(kg)	19.4/23.6	

REFRIGERANT PIPE DATA			
Throttle type	Indoor unit	TXV	
	Outdoor unit	EEV for heating	
Design pressure	(PSIG)	550/340	
Refrigerant Type	R410A		
Refrigerant charge	oz	56.44	
Refrigerant precharge	(ft)	25.0	
	(m)	7.5	
Additional charge for each ft	(oz/ft)	0.69	
Additional charge for each m	(g/m)	65.0	
Liquid side/ Gas side(indoor)	(inch)	3/8" / 3/4"	
	(mm)	9.52/19	
Liquid side/ Gas side(outdoor)	(inch)	3/8" / 5/8"	
	(mm)	9.52/16	
Max. pipe length	(ft)	164.0	
	(m)	50.0	
Max. difference in level	(ft)	82.0	
	(m)	25.0	
Connection method	Flared		
Indoor(cooling)	(Deg. °F)	60~90	
	(Deg. °C)	16~32	
Indoor(heating)	(Deg. °F)	32~86	
	(Deg. °C)	0~30	
Outdoor(cooling)	(Deg. °F)	5~122	
	(Deg. °C)	-15~50	
Outdoor(heating)	(Deg. °F)	-13~75	
	(Deg. °C)	-25~24	

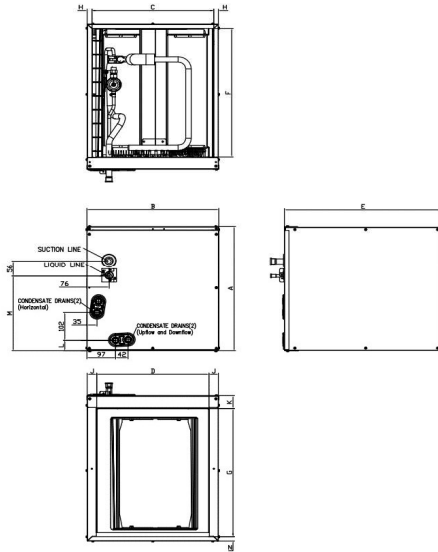
OUTDOOR UNIT DATA			
<b>Compressor</b>			
Type	ROTARY		
Model	KSN140D21UFZ		
Brand	GMCC		
Capacity	(Btu/h)	14962	
Input	(W)	1140	
Rated current (RLA)	(A)	9	
Refrigerant oil/oil charge	(ml)	VG74 440	
<b>Outdoor fan motor</b>			
Model	ZKFN-34-10-1-3		
Qty	1		
Input	(W)	/	
Output	(W)	34	
RLA	(A)	1.0	
Speed	(r/min)	840/700/650	
<b>Air flow &amp; Noise level</b>			
Outdoor air flow (Max.)	(CFM)	1450	
Outdoor noise level	[dB(A)]	58.0	
<b>Outdoor unit</b>			
Dimension (W×D×H)	(inch)	31.69x12.99x21.81	
	(mm)	805x330x554	
Packing (W×D×H)	(inch)	36.02x14.57x24.21	
	(mm)	915x370x615	
Net/ Gross weight	(lbs.)	75.64/81.35	
	(kg)	34.4/36.9	
<b>Accessories</b>			
Adaptor for welding(3/4")	Qty	1	
Adaptor for welding(3/8")	Qty	1	
Adaptor (5/8" to 3/4")	Qty	1	

Indoor unit dimension

NEW PANEL STYLE



OLD PANEL STYLE



Dimensions	KV-14F-A		KV-14F-B		KV-17F-A		KV-17F-B		KV-21F-A		KV-21F-B		KV-24F-A	
	NEW PANEL STYLE		NEW PANEL STYLE		NEW PANEL STYLE		OLD PANEL STYLE		OLD PANEL STYLE		NEW PANEL STYLE		OLD PANEL STYLE	
Model(Btu/h)	18K/20K/22K/24K		30K(48K)		30K/36K		18K/24K		30K/36K/48K		48K		60K	
	inch	mm	inch	mm	inch	mm	inch	mm	inch	mm	inch	mm	inch	mm
A Model Height	18	457	23-1/2	598	23-1/2	599	18	461	24	609	28	711	28	711
B Model Width	14-1/2	368	14-1/2	368	17-1/2	445	17-1/2	445	21	533	21	533	24-1/2	622
C Supply Air Opening Width	13-1/4	336	13-1/4	336	16-3/16	411	16-3/16	411	19-3/4	502	19-3/4	502	23-1/4	591
D Return Air Opening Width	12	303	12	303	15-1/8	384	15-1/8	384	19-1/2	496	19-1/2	496	23	585
E Model Depth	21	534	21	534	21	533	21	533	21	533	21	533	21	533
F Supply Air Opening Depth	18-5/8	473	18-5/8	473	18-5/8	473	18-5/8	473	18-5/8	473	18-5/8	473	18-5/8	473
G Return Air Opening Depth	18-1/2	471	18-1/2	471	18	458	18	458	18-1/2	470	18-1/2	470	18-1/2	470
H Supply Air Opening Side Clearance	5/8	16	5/8	16	5/8	16	5/8	16	5/8	16	5/8	16	5/8	16
I Supply Air Opening Front Clearance	1-3/4	45	1-3/4	45	1-3/4	45	1-3/4	45	1-3/4	45	1-3/4	45	1-3/4	45
J Return Air Opening Side Clearance	5/8	16	5/8	16	1-3/16	30	1-3/16	30	3/4	19	3/4	19	3/4	19
K Return Air Opening Front Clearance	1-13/16	46	1-13/16	46	1-13/16	46	1-13/16	46	1-13/16	46	1-13/16	46	1-13/16	46
L Condensate Drains Height	1-9/16	40	1-9/16	40	1-7/16	37	1-7/16	37	2-1/8	54	2-1/8	54	2-1/8	54
M Liquid Line Height	11-1/2	292	11-1/2	292	16-1/2	418	10-7/8	276	16-5/16	414	21	533	20-1/4	514
N Return Air Opening Side Clearance	3/4	19	3/4	19	3/4	19	1-3/16	30	3/4	19	3/4	19	3/4	19

Outdoor unit dimension

